

## Cove skirting system installation instruction

Colorex Plus Basic and Colorex Plus EC are best suitable to be finished with tailor made corners and skirting. This solution is specifically designed for hygienic critical applications or where there is a need to comply with ground water protection regulations.

For this skirting solution, we provide a special cove former in addition to our well-known pre-welded skirting stripes as well as preformed inner and outer corner pieces. The cove former is fitted loose between wall and tiles, while the skirting stripe can be glued and welded over it.

### Required tools:

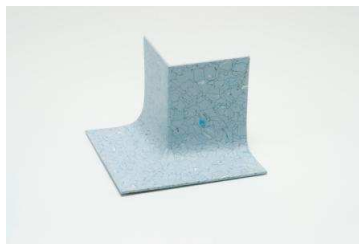
Standard tools for Colorex welding.

### Required accessories:

Colorex cove skirting stripes



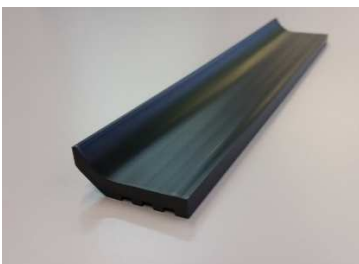
External preformed corners



Internal preformed corners



Cove former profile



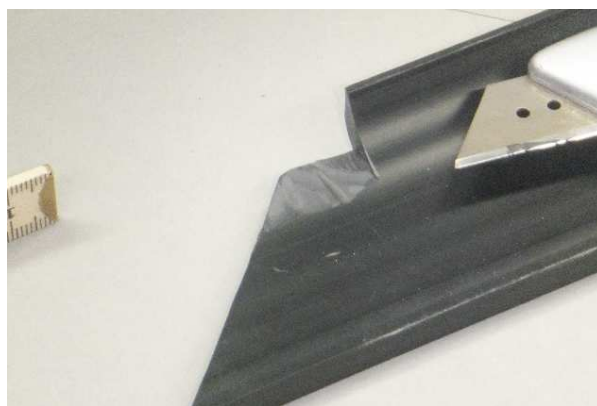
Welding rod



**How to proceed with the installation:**



Fit the cove former profile loose along the wall.



Cut the profile-end to make room for the reinforcement at the back of the Colorex external preformed corner.



Cut the profile-end to make room for the reinforcement at the back of the Colorex external preformed corner.



Fit the Colorex Plus tiles tight between the cove and the installed Colorex Plus floor.



Install the preformed internal and external corner pieces and the cove skirting stripes with contact adhesive.



All components can now be heat welded for perfect hygiene and functionality.



Final result: neat, hygienic and watertight floor-to-wall transitions.

**BONDLINE**  
STATIC CONTROL SOLUTIONS  
[www.bondline.com.au](http://www.bondline.com.au)  
[info@bondline.com.au](mailto:info@bondline.com.au)  
(02) 9757 3590